



TRIBES INDIA

PRODUCT CATALOGUE

CONTENT



AMBABARI MEENAKARI

BLUE POTTERY

DOKRA

BIDRI

TRIBAL PAINTINGS

TRIBAL TEXTILES





AMBABARI MEENAKARI

Enameling is the art of colorings or decorating a metal surface by attaching or fusing pieces of different mineral substances, over it. Enameling is considered the most alluring and technical of all metal decorations. In the past enameling was only done on gold, but presently it is done on other metals like silver, copper etc.

Ambabari Elephant

₹6,446/-

H15" X W10" . 1SMTDCORJ06867

Handcrafted by Shivam SHG





The technique of Meenakari requires a high degree of skill and application. The piece of metal on which meenakari is to be done is fixed on a lac stick. Delicate designs of flowers, birds, fish etc are etched or engraved on it. This leads to the creation of walls or grooves, to hold color. Enamel dust of required color is then poured into the grooves and each color is fired individually. The heat of the furnace melts the color and the colored liquid gets spread equally into the groove. This process is repeated with each color.

Ambabari Elephant Trunk Up

₹4,950/-

H8" X W9" . 1SMTDCORJ06865

Handcrafted by Shivam SHG





BLUE POTTERY



Blue Pottery Condiment Jar
₹832/-
1TPTDPTRJ00335

Blue Pottery Incense Stick Stand
₹77/-
1TPTUTIRJ00375

Blue Pottery Tray
₹286/-
1TPTUTIRJ00335





The Blue Pottery is of Turko-Persian origin and it is a significant craft of Jaipur. Such is its importance that Jaipur Blue Pottery was given a GI status in India. A GI or Geographical Indication is the sign used on the products that have the regional origin and this can be depicted from its label. The most distinctive feature of Jaipur Blue Pottery is that it is a no clay product. Instead of clay, the dough for the pottery is made by mixing ground glass, quartz powder, Earths Fuller's, borax, gum, soda bicarbonate, and water

Blue Pottery Plate ₹990/-

H 12" X W12" . 1TPTDPTRJ00330

CURATED BY GHOOMAR HANDICRAFTS





MOSAIC LAMPS

Candle Stand

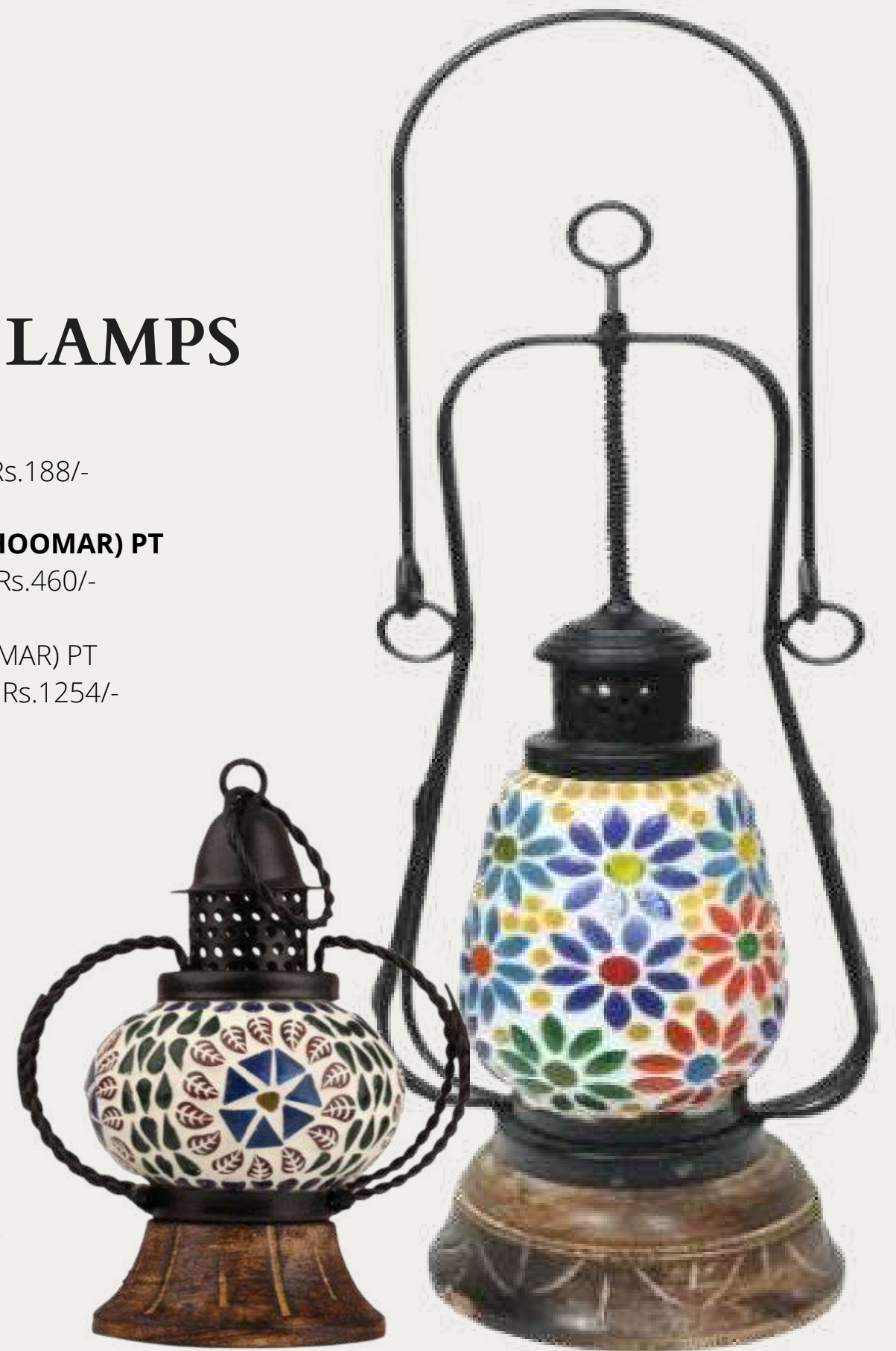
SKU:1TPTUTIRJ00078 | Rs.188/-

LALTEN SMALL : RJ (GHOOMAR) PT

SKU: 1TPTUTIRJ00077 | Rs.460/-

LALTEN BIG : RJ (GHOOMAR) PT

SKU: 1TPTUTIRJ00076 | Rs.1254/-





Matka Flower Vase ₹8800/-
H 35" X W11" . 1TPTDPTRJ00328

Matka Flower Vase ₹2640/-
H 15" X W9" . 1TPTDPTRJ00329

Matka Flower Vase ₹2640/-
H 15" X W9" . 1TPTDPTRJ00329

Tarkashi

THE ART OF INLAY WORK ON WIRE

The technique of inlaying fine flattened wire of brass, copper or silver in wood is called Taarkashi. The patterns inlayed are usually geometric forms or florals with inspirations from Mughal arts. Metal inlay is a painstaking and highly skilled craft. The artisan transfers a design from a piece of paper onto a block of wood. He then carves deep, thin grooves along the trace. The engravings are inlaid with Brass, Copper & Silver. Small coiled dot-like forms called bhiriyan, an element unique to tarkashi, are beaten directly into wood. The object is then planed, sanded with a water based emery paper and machine buffed to give it a smooth polish.



Handmade Wooden Elephant

1SGADCTRJ01553

Rs.1034

Handmade Wooden Tortoise

1SGADCTRJ01561

Rs.1254



The Arts & Crafts of Dokra



Framed Dokra Jaali

₹607/-

H6" X W6" . 1TMTDCOMP08027-08



Traditionally the Gadwas, Gonds and Dhurwas tribes of Chhattisgarh practice the Dhokra art with lost wax technique or hollow casting. It involves patterning a clay core intricately with wax ribbons and then coating it carefully with a mix of clay and hay. The wax is subsequently melted off, and the cavity formed is filled with molten metal - an alloy of copper and tin. When this solidifies, the craftsman reveals the beauty of his creation by cautiously breaking open the outer clay shell.

1.Lalten

₹3,876./-

H9.5" X W4" . 1TMTDCOMP09714

Weight- 1250 Gm

As the legacy of ancient Chhattisgarh goes, Todi was a musical instrument designed and developed by the artisans belonging to Gadwa tribe of Chhattisgarh, made in big sizes and used by the infantry of the tribal kings of Bastar to declare the battle and also to motivate their army. Later, it developed into a medium for divine intervention of God's blessings. In each festival of Bastar one can see the tribals blowing the Todi when the idols of Gods or Goddesses are taken in a procession from the temples. The biggest demonstration of the music of Todi can be experienced during the Dussera Festival of Bastar celebrated at Jagdalpur and Dantewada for Goddess Dhanteshwari.



Todi Baaja ₹1320/-
W9" 1TMTDCOMP08377



COCONUT BOX

₹1,089/-

1TMTUTYOR00082

Handcrafted by Anawesha Arts & Crafts

READING LADY

₹468/-

.1TMTDCOOR09755

Handcrafted by Anawesha Arts & Crafts





Tortoise

₹1,093/-

1TMTDCOMP09728

Adiwasi (Single Piece)

₹2750/-

H12" X W3" .

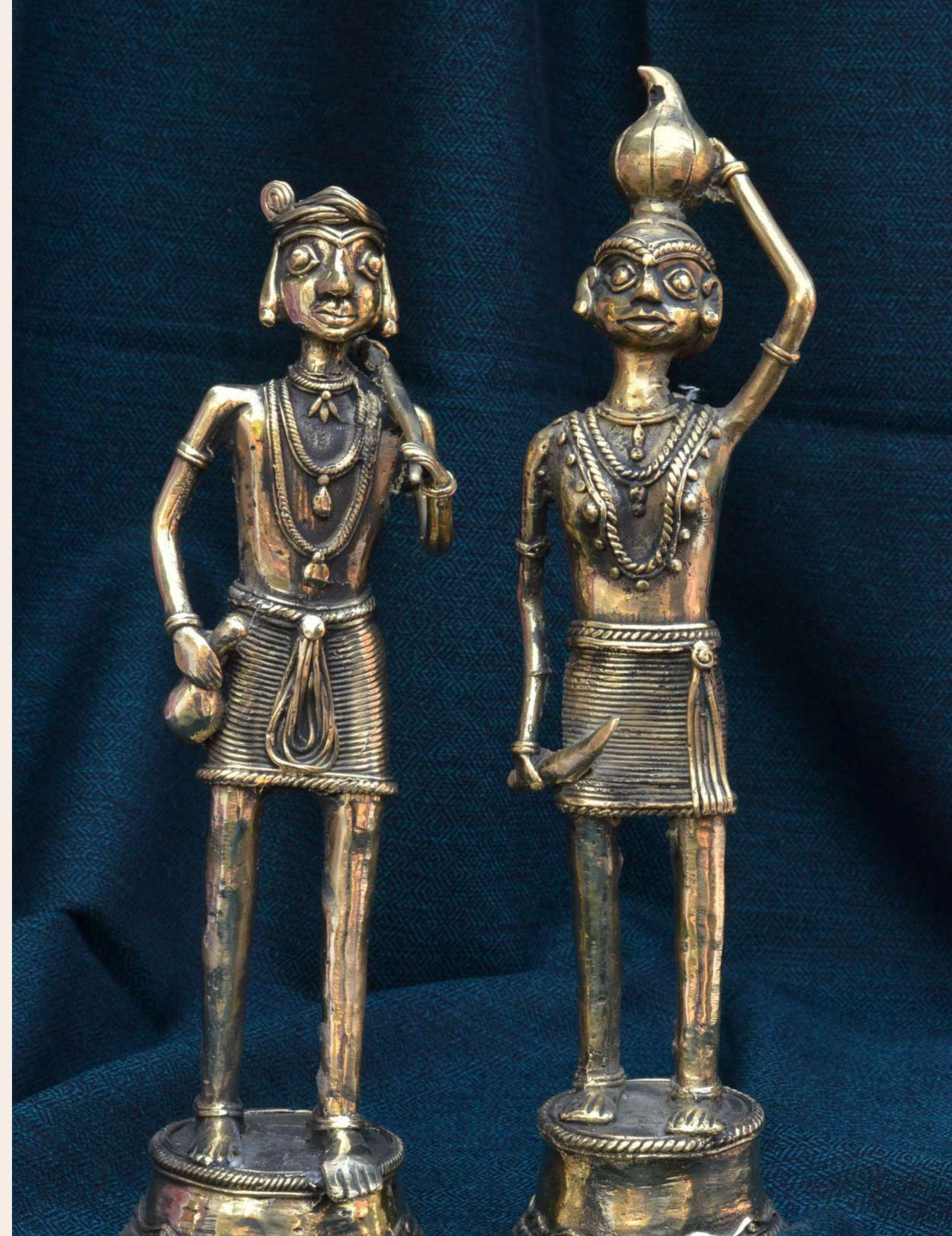
1TMTDCOMP08044

Nandi Ghanti

₹5974/-

H10" X W12" .

1TMTDCOCG08057 .





ADIWASI JODA
₹2607/-
1SMTDCOMP08020%



GANESHA MUSICIAN
₹1540/-
1TMTDCOCG06014



BIDRI

Originated in the town of Bidar in Karnataka, in the 14th century. Bidri Work handicraft is an art of Inlaying Silver into at Bidar fort, magically imparts Black color to the Primary metals & has been accorded prestigious GI Status. A new mould must be prepared to make a cast in which molten metal, an alloy of zinc & copper is poured.

Motifs are sketched on them to be etched with a chisel and hammer. The engravings are inlaid with silver wire. It is this contrast of shining silver to the black metal that is unique to Bidri art.

The Magic of Inlay Work



Hookah Base Surayi Vase

₹80,465/-

H8" X W6" . 1TMTDCOKA09789

Curated by Bidri Kalakruti Mahila SHG



Bidri Fish Tarakashi Work

₹26125/-

H9" X W9" . 1TMTDCOKA09793

Curated by Bidri Kalakruti Mahila SHG



Bidri work Silver Tarkashi Fish Bowl

₹4760/-

1SMTDCOKA07907

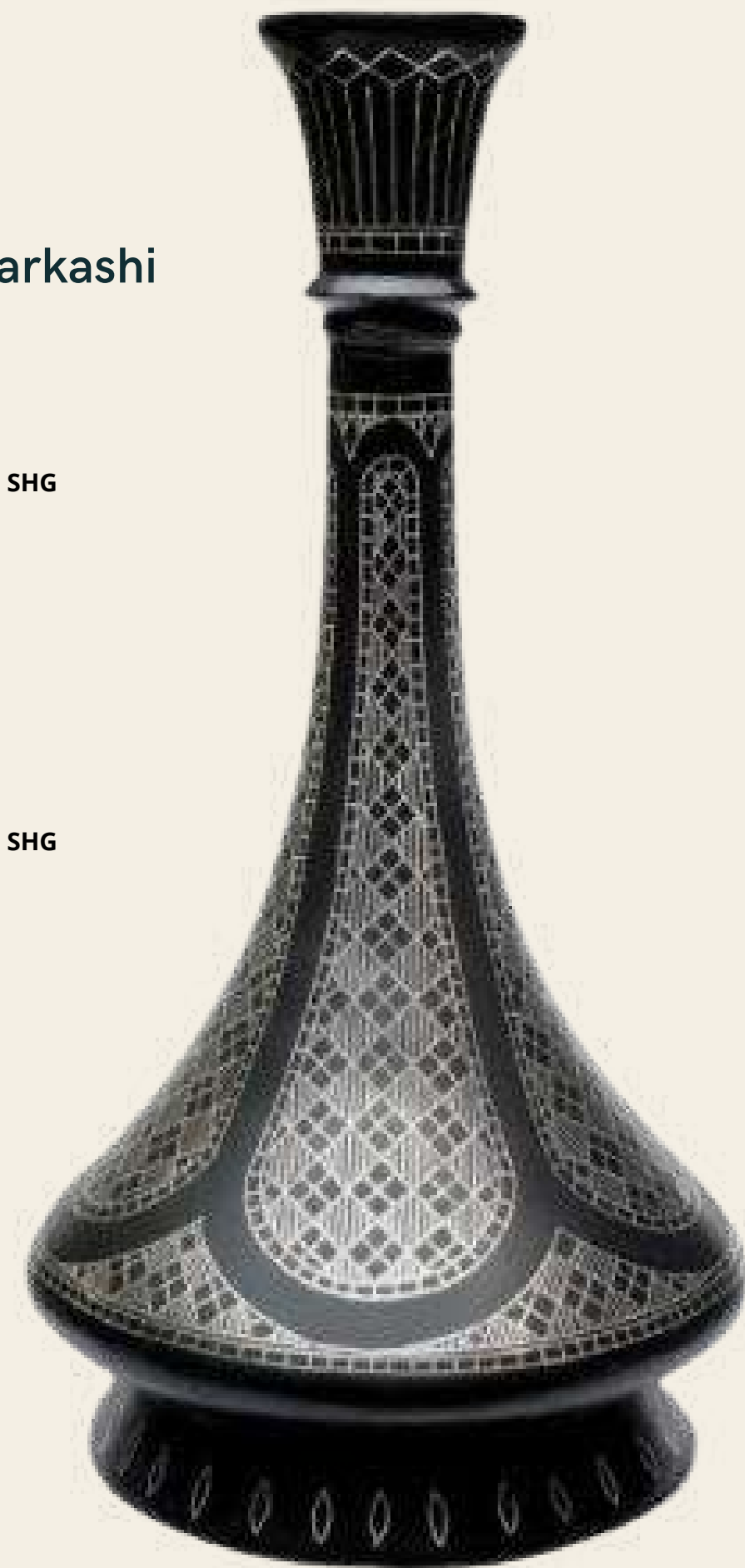
Curated by Bidri Kalakruti Mahila SHG

Shahnayi Vase

₹5905/-

1TMTDCOKA08504_KA

Curated by Bidri Kalakruti Mahila SHG



LONGPI POTTERY

Stone Mug Round

₹340/- 1TPTKITDL00386

Nut Bowl

₹317/- 1TPTKITDL00073



Pumpkin Kettle

Named after the village of Longpi in Manipur, the Thankul Naga tribes practice this exceptional pottery style. A single village of 400 houses in the district Ukhru of North-East Manipur, with perhaps just 200 artisans plying the craft, is the nerve center of longpi earthenware.



Pumpkin Kettle

₹1320/-

1TPTKITDL00422

Himachal Craft

Despite the geographical isolation of Himachal Pradesh, its denizens have evolved their own unique tradition of handicrafts. Although its origin was embedded in the Moghul Art atlas, the journey of its Indian trajectory was handed down from an Islamic entrepreneur to a Kinnauri tribe crafts person, Ram Bhagat Singh, who pursued and promoted it till his last breath.



Elephant

₹2,640/-

H5" X W4" . 1TGADCTHP00893

Himachal Craft Bowl

₹1,716/-

H12" X W10" . 1TGAKTCHP00269



TRIBAL PAINTINGS

TribesIndia patronizes 5 School of Tribal Paintings.

- Gond Painting from Madhya Pradesh
- Pattachitra Painting from Odisha
- Saura Painting from Odisha
- Pithora Painting from Gujarat
- Warli Painting from Maharashtra

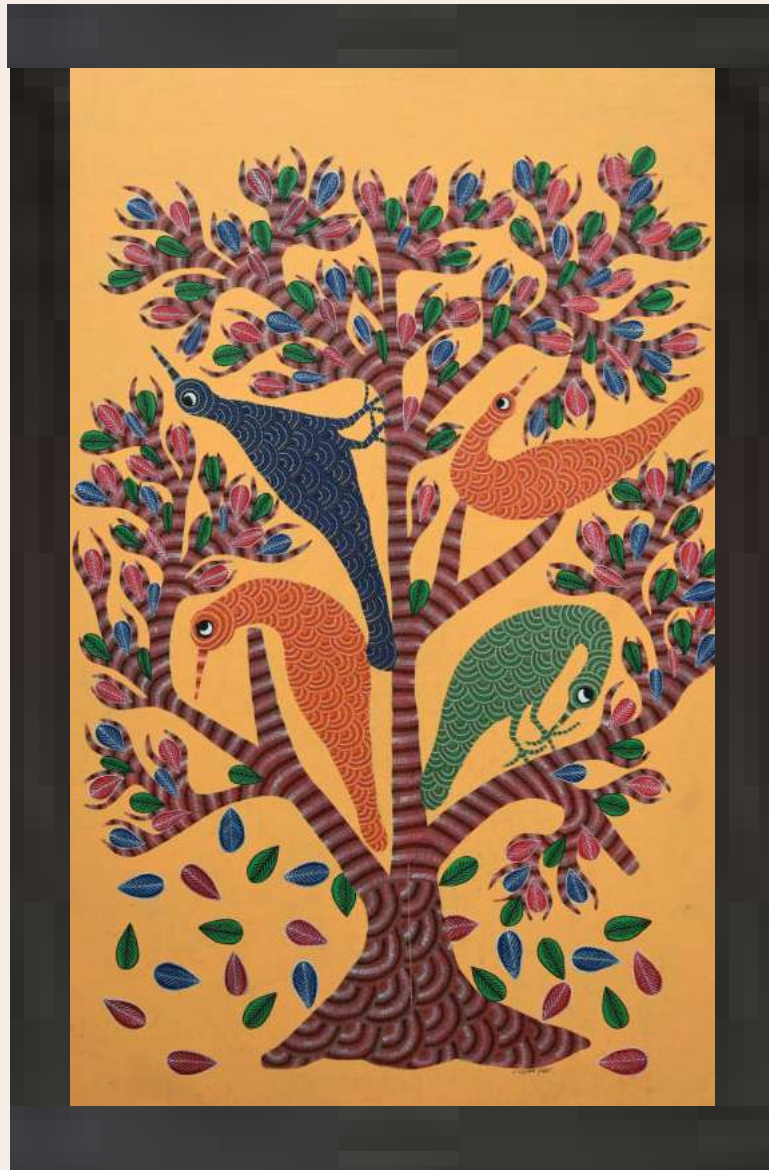
AT TRIBES INDIA WE OFFER A WIDE RANGE OF HANDPAINTED TRIBAL PAINTINGS SUCH AS GOND, PITHORA, WARLI, PATTACHITRA & SAURA. TRIBAL ARTWORKS ARE CREATED BY TRIBAL ARTISANS WHO PAINTS IT 100% BY HAND AND DUE TO WHICH EACH PAINTINGS IS DIFFERENT FROM THE OTHER. TYPICALLY PAINTINGS AT TRIBES INDIA MAY BE FRAMED OR UNFRAMED DEPENDING ON THE REQUISITE OF THE CLIENT. YOU CAN SELECT FROM ANY OF OUR CURATED PAINTINGS OR REACH OUT TO US FOR FURTHER BROWSING WIDE VARIETY OF PAINTINGS AVAILABLE WITH US IN DIFFERENT SIZE AND COMPOSITION.*

Bird Gond Canvas Painting

₹13989/-

H29" X W27" . 1TPNGNDDL03665

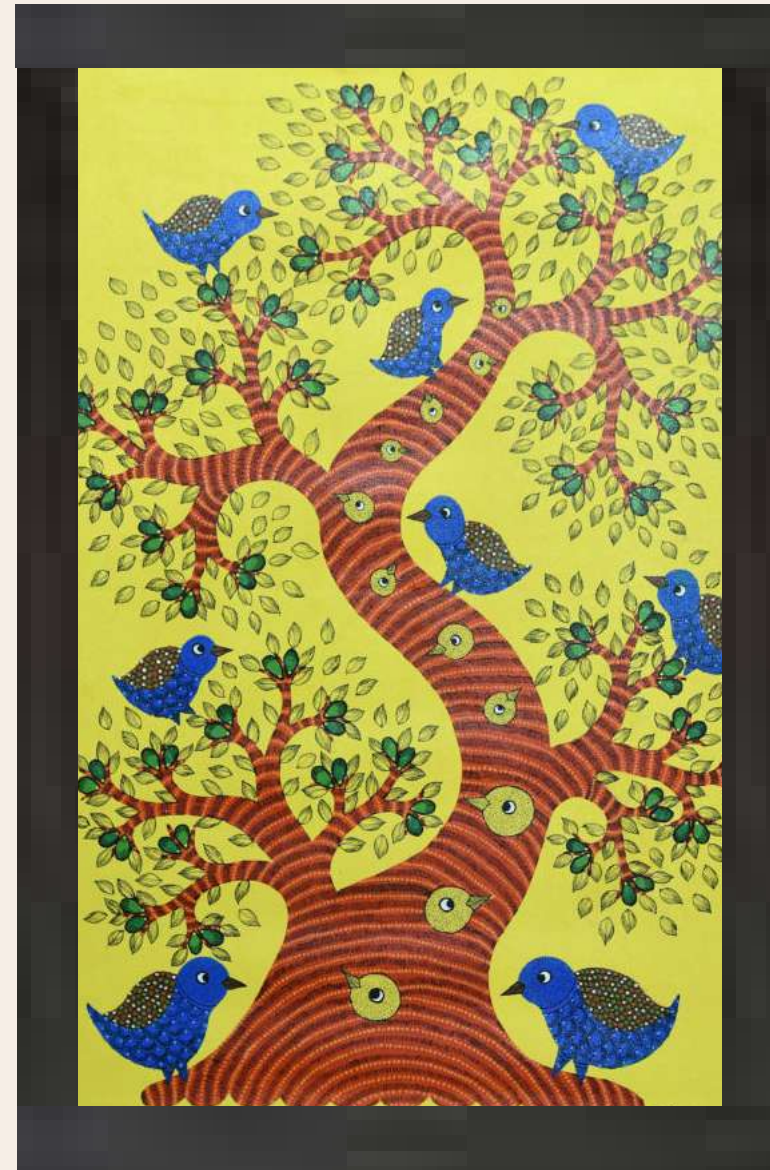




Bird with Tree Gond Canvas Painting

₹23469/-

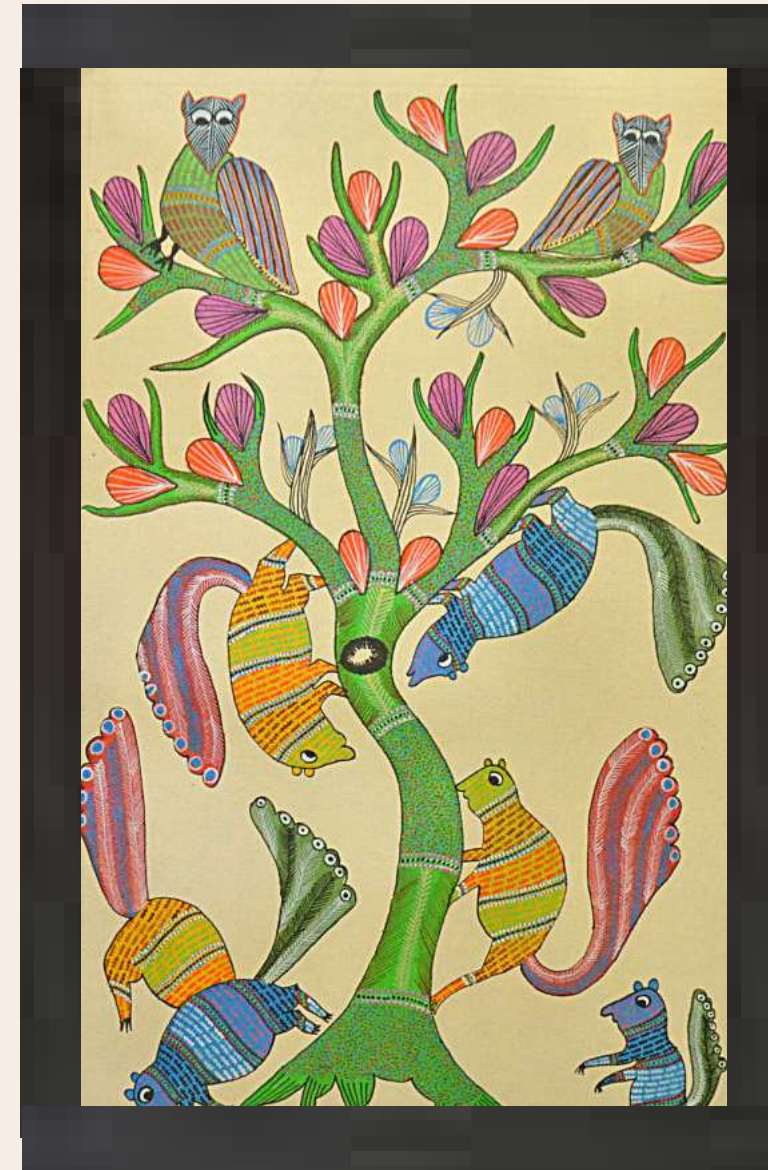
H29" X W27" . 1TPNGNDDL04116



Bird Gond Canvas Painting

₹11406/-

H29" X W27" . 1TPNGNDMP09422



Squirrel Gond Painting

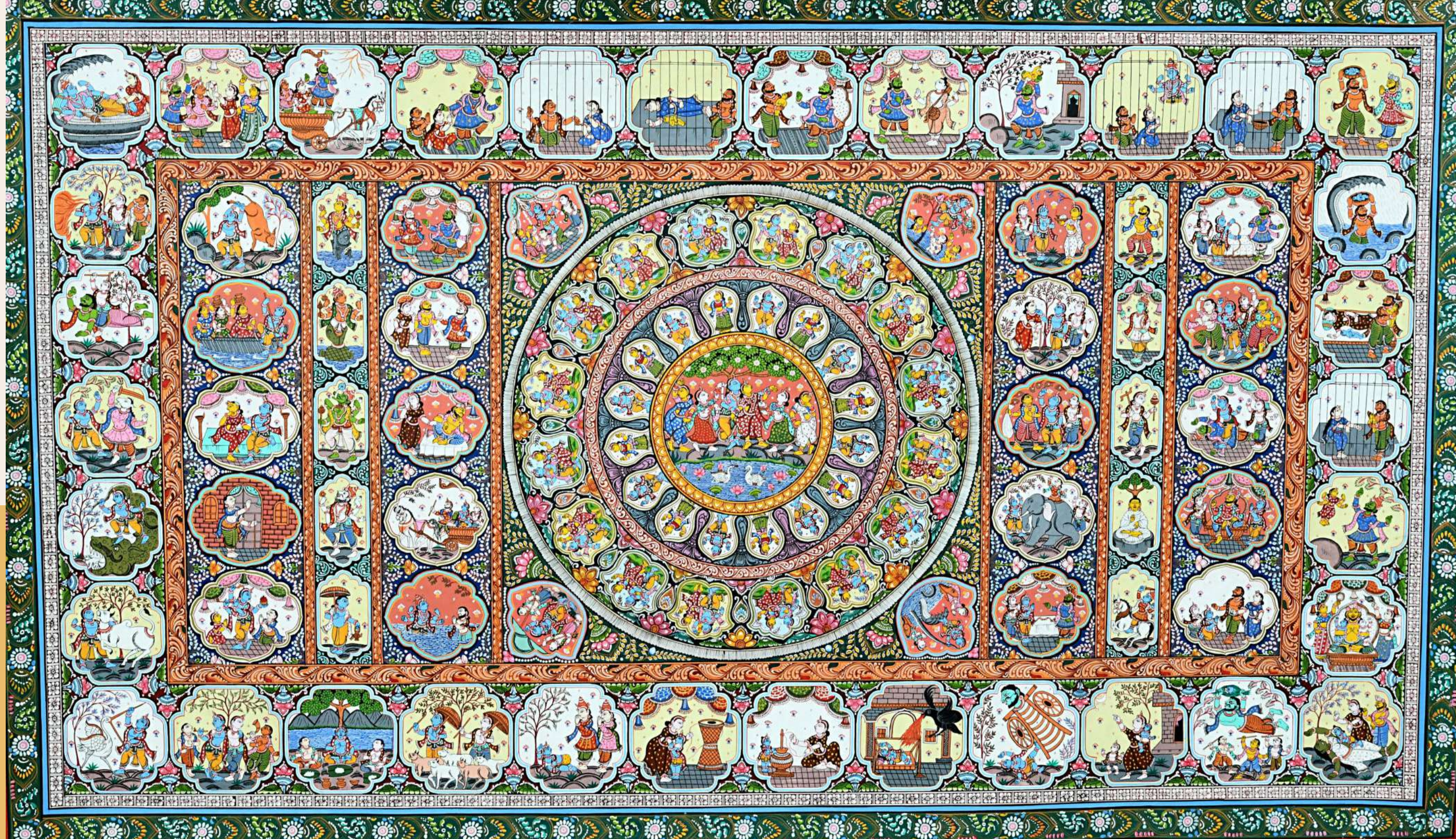
₹4305/-

H29" X W27" . 1TPNGNDDL04116

Gond Paintings

Gond art is a form of painting from folk and tribal art that is practiced by one of the largest tribes in India – the Gond – who are predominantly from Madhya Pradesh, but also can be found in pockets of Andhra Pradesh, Maharashtra, Chhatisgarh, and Odisha. The work of Gond artists is rooted in their folk tales and culture, and thus story-telling is a strong element of every painting. The paints are usually derived naturally from objects such as charcoal, coloured soil, plant sap, mud, flowers, leaves and even cow dung. Painted in several bright colours, the placement of motifs showcasing village life and the blending of human figures with rituals and nature depict the Gond's inherited skills and creativity.





PATTACHITRA PAINTING

Pattachitra evolved from Sanskrit. When broken down into its two parts, Patta means cloth, and Chitra means picture. Hence, Pattachitra is a picture painted on a piece of cloth. This form of art is closely related to the cult of Shri Jagannath and the temple traditions in Puri. Believed to have originated as early as the 12th century, it is one of the most popular living art forms, and people in Odisha practice it to this day.

Pattachitra Krishna Leela Painting

₹1,50,000/-

H 36 X W 60 1TPNOTPOR01842

Curated by Rameshwar Munda



Palm Leaf Pattachitra

Another form of Pattachitra, apart from painting on the cloth, is the **engravings over a palm leaf**. The art relates to fables and stories from the Hindu mythology and tells tales about an incident or episode of a God or Goddess, their different stages, to make the people understand the flow of their deity's life. The palm leaves are cut off and left to dry to give the artist a hard surface to work on. They are then stitched together and then the carvings follow. The images are traced by using black ink with a special iron tip nib, and are carved to give the effect of a black color filled images. These leaves that are stitched together can also be easily folded like a fan or framed.

Lord Ganesha Pattachitra Painting

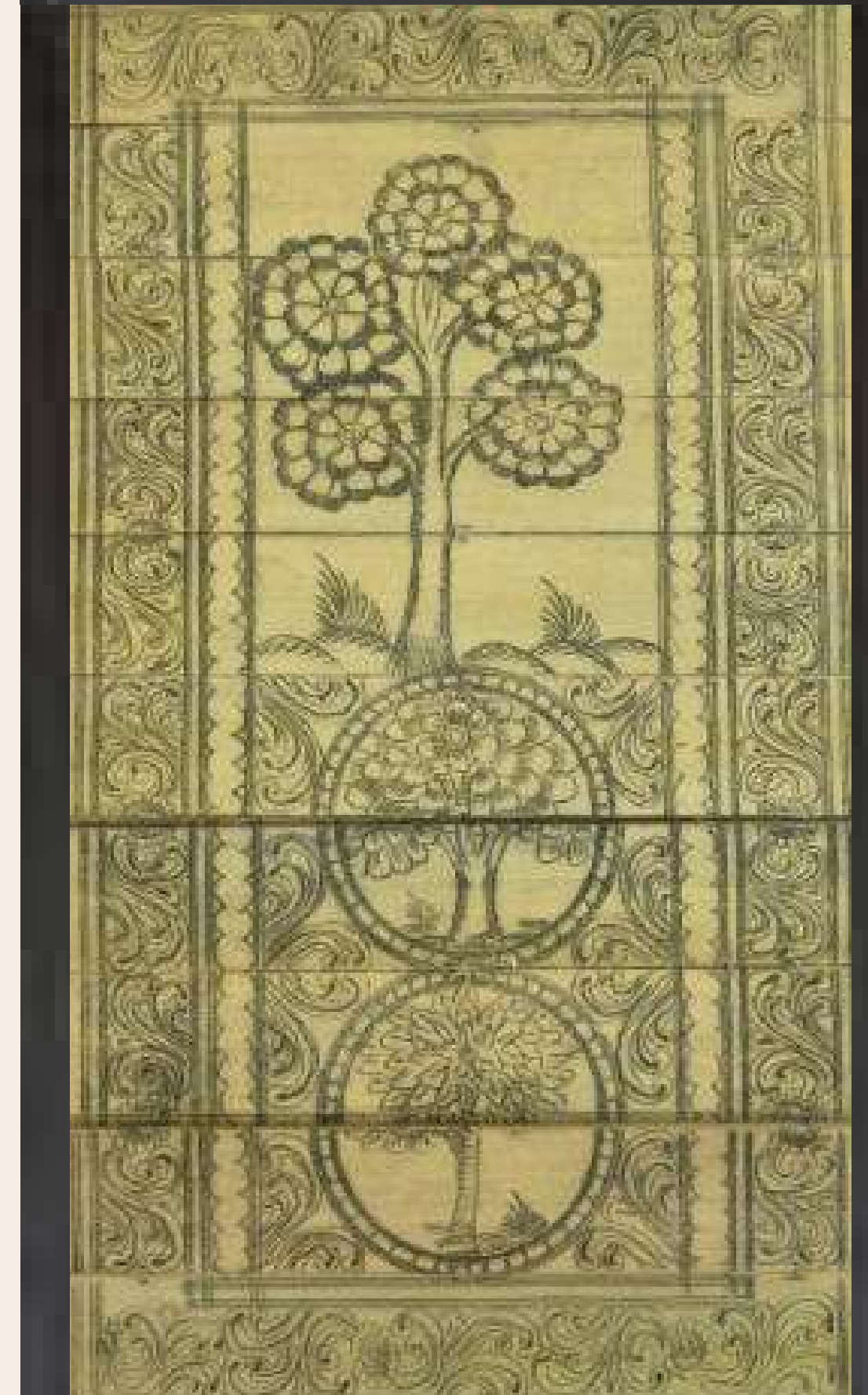
₹900/-

H 18 X W 6 1TPNOTPOR01909

Tree of Life Pattachitra Painting

₹900/-

H 18 X W 6 1TPNOTPOR01940



Warli Paintings

Warli painting is a form of tribal art mostly created by the tribal people from the North Sahyadri Range in Maharashtra, India. Warli artists use their clay huts as the backdrop for their paintings, similar to how ancient people used cave walls as their canvases. The central motif in the ritual painting is surrounded by scenes portraying hunting, fishing, and farming, and trees and animals. Festivals and dances are common scenes depicted in the ritual paintings. The walls are made of a mixture of branches, earth and red brick that make a red ochre background for the paintings. The Warli only paint with a white pigment made from a mixture of rice flour and water, with gum as a binder.



Handcrafted Warli Canvas Painting

Price on Request

1TPNWRLMH01598



Handcrafted Warli Canvas Painting

Price on Request

1TPNWRLMH01623



Saura Painting

Saura tribal painting is a style of wall mural paintings associated with the Saura tribals of the state of Odisha in India. Saura paintings are an integral part of the religious ceremonies of the Saura tribals and are found in the southern Odisha districts of Rayagada, Ganjam, Gajapati and Koraput. These paintings draw upon tribal folklore and have ritualistic importance. Ikons make extensive use of symbolically pregnant icons that mirror the quotidian chores of the Sauras. People, horses, elephants, the sun and the moon and the tree of life are recurring motifs in these ikons. Ikons were originally painted on the walls of the Saura's adobe huts.

Rs.3150

1TPNSRAOR02134



Pithora Painting

Pithora paintings are considered auspicious and are believed to bring peace, happiness and prosperity to the home. That's why traditional tribal houses, even today, display Pithora art on three inner walls.

Price on Request
(96 CM X 82 CM)
SKU: 1SPNPTRGJ00577





Kantha Lamp Wooden Stand
Rs.1760/-
1TGADCTWB03919

KANTHA REINVENTED

An embroidery hailing from the Eastern part of the Indian subcontinent, Kantha in itself is known for beautiful textures and change of shades in color owing to the simple stitches it uses. Kantha motifs are drawn from nature in the simplest form.



Kantha Lamp Shade
Rs.1705
1TGADCTWB03920



Kantha Lamp Shade
Rs.1705
1TGADCTWB03920

Tribal Heritage

Hersil Wool Shawl

1STXGENUT01030

Rs.2222/-





Mnagodi Single Patti Wool Stole

1STXWOMCH05941

Rs.1195/-



Barkhi Design Wool Shawl

1STXWOMCH05916

Rs.2755/-



Silk & Pashmina Wool Stole

1STXWOMHP03435

Rs.5382/-



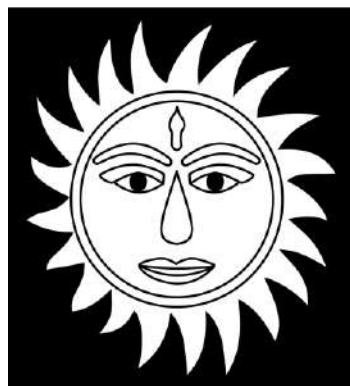
TODA EMBROIDERY SHAWL

An embroidery hailing from the Eastern part of the Indian subcontinent, Kantha in itself is known for beautiful textures and change of shades in color owing to the simple stitches it uses. Kantha motifs are drawn from nature in the simplest form.

11TTXWOMHP01240_1

Rs.1492/-

ट्राईफेड



TRIFED

Tribal Cooperative Marketing Development Federation Of India Ltd.(TRIFED)

Address:

NSIC Business Park, NSIC
Estate, Okhla Phase -
III, Okhla Industrial Area,
Area, New Delhi - 110020

Telephone:

091(11)-71600410, 71600420

Email

mamtasharmaa.trifed@gmail.com
Mayur93gupta@gmail.com

Website:

trifed.tribal.gov.in
www.tribesindia.com